

See discussions, stats, and author profiles for this publication at: <https://www.researchgate.net/publication/340092708>

Swaying Phenomenon of Express Railway Train in Malaysia

Conference Paper · July 2018

CITATION

1

READS

27

6 authors, including:



Mohd Azman Abdullah

Technical University of Malaysia Malacca

82 PUBLICATIONS 155 CITATIONS

[SEE PROFILE](#)



Ahmed E. Mohan

Al-Furat Al-Awsat Technical University

10 PUBLICATIONS 3 CITATIONS

[SEE PROFILE](#)

Some of the authors of this publication are also working on these related projects:



Proton Green Mobility 2012 [View project](#)



Performance analysis of brake discs in trains [View project](#)

Swaying Phenomenon of Express Railway Train in Malaysia

Mohd Azman Abdullah^{1,2,3*}, Norazman Abu Hassan³, Nor Akmal Mohd Foat³, Muhammad Farid Anwar Mohd Shukri³ and Ahmed Esmael Mohan⁴

¹) Faculty of Mechanical Engineering, Universiti Teknikal Malaysia Melaka, Hang Tuah Jaya, 76100 Durian Tunggal, Melaka, Malaysia

²) Centre for Advanced Research on Energy, Universiti Teknikal Malaysia Melaka, Hang Tuah Jaya, 76100 Durian Tunggal, Melaka, Malaysia

³) Rolling Stock Department (RST), ERL Maintenance Support Sdn. Bhd. (E-MAS) (498574-T), Kompleks Rel Udara, Bandar Baru Salak Tinggi, 43900 Sepang, Selangor, Malaysia

⁴) Al-Mussaib Technical College/Al-Furat Al-Awsat Technical University, 51009, Babylon, Iraq

*mohdazman@utem.edu.my

Keywords: High speed train; train swaying; railway dynamic

ABSTRACT – Currently, only one type of train in Malaysia operated for express transport, which is the Express Rail Link (ERL). Due to high speed operation, 145 km/h, the trains suffers from swaying phenomenon and ride comfort lessening. This paper discusses the swaying phenomenon at several locations of the track. The dynamic performance of the train is also studied.

1. INTRODUCTION

Currently, only one type of train runs at high speed operation in Malaysia which is the express rail link (ERL) train. The train is operated at average speed of 145 km/h at a roughly 57 km track from Kuala Lumpur Sentral (KLS) station to Kuala Lumpur International Airport (KLIA) station (Figure 1). In between these stations, there are another three transit stations, Bandar Tasik Selatan (BTS), Putrajaya Sentral (PTJ) and Salak Tinggi Station (STS). The train operated non-stop from KLS to KLIA and vice versa.

Due to high speed operation, the train suffers from swaying phenomenon [1][2]. This phenomenon affects the ride comfort of the passengers and deteriorating the quality service of the company. The significant swaying effect can be observed at several locations throughout the track. This paper discusses the swaying analysis of the high speed train on actual field. The dynamic performance of the train is also studied for future improvement and ride comfort enhancement.

2. METHODOLOGY

The swaying data is recorded from the actual operational train bounding from KLS station to the KLIA station (Figure 1). The exact locations to monitor swaying are labelled as point A at kilometre 26.5 (Km 26.5), B (Km 33), C (Km 36), D (Km 37.7), E (Km 40.7), F (Km 49) and G (Km 52.5). A standard Lego Mindstorms EV3 data logging device with accelerometer & gyro sensor (Figure 2) are used to measure and record the lateral vibration and yaw motion [3][4] together with portable navigation device to record the latitude, longitude, speed and distance travel of the train. The data logging device is located at the rear driver cab of the train (Figure 3) where the forward

direction of the train is on the longitudinal x axis. The orientation of the sensors shows the positive values of the data.

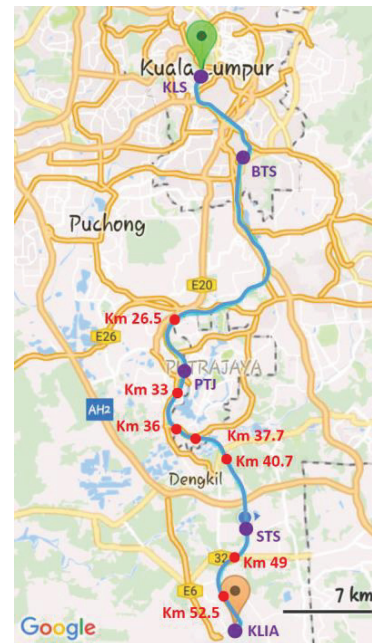


Figure 1 High speed train map from KLS to KLIA

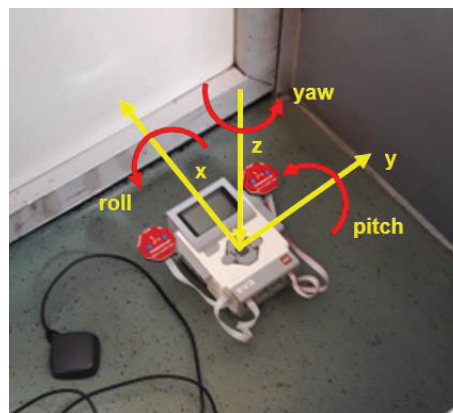


Figure 2 Orientation of the sensor on the train floor

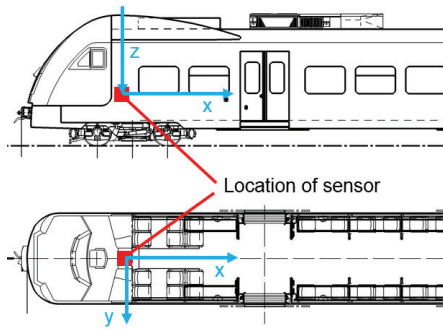


Figure 3 Location of sensor

3. RESULTS AND DISCUSSION

The obvious train dynamics that produce swaying are lateral vibration and yaw moment of the train [5]. Figure 4 and 5 show the lateral vibration and yaw moment of the train respectively. From Figure 4, it can be seen that the speed of the train at the specific locations (A to G) is at the maximum. High lateral vibrations are observed at locations B and E as shown by Table 1. From Figure 5, most of the locations with continuous yaw are at A, C and F. The continuous yaw value shows that the train continuously having swaying effect.

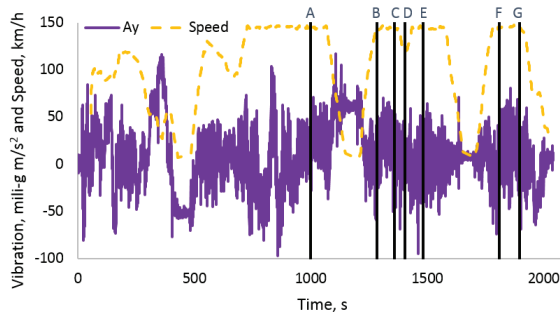


Figure 4 Train lateral vibration

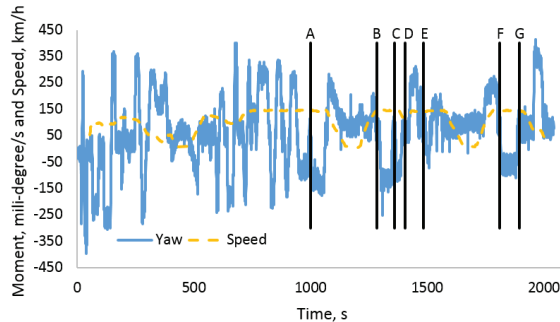


Figure 5 Yaw motion of the train

4. CONCLUSION

The swaying phenomenon of the high speed train is due to lateral vibration and yaw moment of the train. The higher the value of lateral vibration and yaw moment, the higher the swaying effect. Comparing

those two dynamic effects, the most ride comfort influential is yaw moment which are at location A, C and F. This swaying data can be used for future improvement in term of rail track work as well as train damping systems.

Table 1 Specific results at the location

Location	Ay, milli-g m/s ²	Yaw, milli- deg/s	Speed, km/h
A	-7	67	144.86
B	-30	52	145.33
C	-12	76	145.76
D	-2	72	120.42
E	24	88	143.96
F	-17	50	144.90
G	19	85	145.44

5. ACKNOWLEDGEMENT

The authors gratefully acknowledged the support from Advanced Vehicle Technology (AcTiVe) research group of Centre for Advanced Research on Energy (CARE), Universiti Teknikal Malaysia Melaka, The Ministry of Education, Malaysia, ERL Maintenance Support Sdn. Bhd. and Al-Mussaib Technical College/Al-Furat Al-Awsat Technical University and Ministry of Higher Education and Scientific Research, Iraq.

REFERENCES

- [1] Liu, D., Lu, Z., Zhong, M., Cao, T., Chen, D., & Xiong, Y. (2018). Measurements of car-body lateral vibration induced by high-speed trains negotiating complex terrain sections under strong wind conditions. *Vehicle System Dynamics*, 56(2), 173-189.
- [2] Abdullah, M. A., Ramli, F. R., & Lim, C. S. (2014). Railway Dynamics Analysis Using Lego Mindstorms. In *Applied Mechanics and Materials, Trans Tech Publications*, Vol. 465, pp. 13-17.
- [3] Abdullah, M. A., Jamil, J. F., Ismail, N., Nasir, M. M., & Hassan, M. Z. (2015). Formula varsity race car-Roll dynamic analysis. *Proceedings of Mechanical Engineering Research Day 2015*, 2015, 23-24.
- [4] Abdullah, M. A., Jamil, J. F., & Salim, M. A. (2015). Dynamic performances analysis of a real vehicle driving. In *IOP Conference Series: Materials Science and Engineering*, IOP Publishing, Vol. 100, No. 1, p. 012017.
- [5] Ishiguri, K., Kazato, A., Miyahara, K., Niiyama, M., & Sasaki, K. (2017). Improvement of the Lateral Ride Comfort on Railway Vehicles by Application of Pneumatic Actuators for Centering. *Quarterly Report of RTRI*, 58(1), 14-20.